

# Lone Pine Koala Sanctuary Entry Ticket

• Flexible. Up to 2 hours

• Instant Confirm

## • KEY FACTS •



Entry to Lone Pine Koala Sanctuary



1. Transport from/to hotel
2. Food & beverages not listed as Inclusions
3. Souvenirs
4. Travel Insurance

## How to get there

### • By Car

Lone Pine is approximately a 15 minute drive from Brisbane City. For best directions, enter the address into Google Maps on your phone.

### • By Bus

There are regular buses to and from Lone Pine operated by the City: Bus number 430 from Platform 2C, Queen Street Station and Bus number 445 from Stop 41, Adelaide Street.

Please check the Transport Perth timetables

(<https://www.transperth.wa.gov.au/>) for more details to plan your trip.

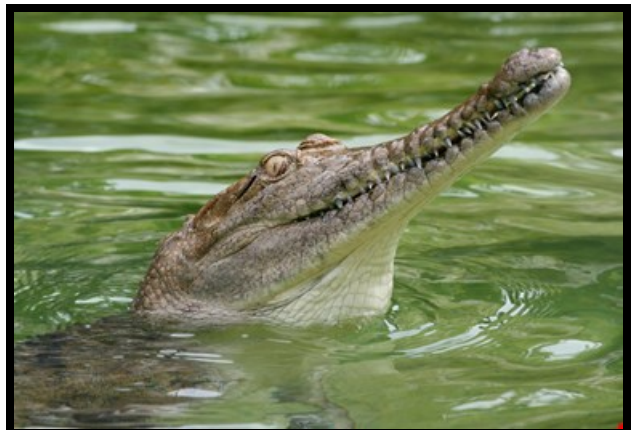
## Operating hours

|                             |               |
|-----------------------------|---------------|
| Daily                       | 09:00 - 17:00 |
| Christmas Day (25 December) | 09:00 - 16:00 |
| Anzac Day (25 April)        | 13:30 - 17:00 |

## • OVERVIEW •

### Lone Pine Koala Sanctuary Entry Ticket

Only 12km from Brisbane City, Lone Pine Koala Sanctuary is the world's first and largest koala sanctuary with over 130 koalas. Hold a koala, hand feed kangaroos, meet a large variety of Australian wildlife in beautiful, natural settings.



# Lone Pine Koala Sanctuary

## At Lone Pine:

- Don't just see animals, but meet them
- Connect emotionally with nature
- Experience habitats
- Understand that protecting habitats is protecting wildlife
- See and hear information relevant to you and your part of the world
- Share your memories

Lone Pine Koala Sanctuary is home to 100 species of Australian native wildlife.

- Tasmanian devil
- Common wombat
- Dingo
- Echidna
- Southern hairy-nosed wombat
- Freshwater crocodiles
- Southern cassowary
- Red-tailed black cockatoo
- Rainbow Lorikeet
- Freshwater turtles
- Barking owl
- Wedge-tailed eagle
- Bats
- Barn owl
- Major Mitchell
- Sulphur-crested cockatoo
- Emu
- Gang-gang cockatoo
- Kookaburra
- Little corella
- Blue-winged kookaburra
- Barnyard
- Tawny frogmouth
- Mertens' Water Monitor
- Lace monitor
- Bush thick-knee
- Wildlife in the wild

## Daily Shows and Activities

Reference Only. Subject to change without notice

| Time  | Shows and Activities        |
|-------|-----------------------------|
| 09:45 | Wild Lorikeet Feeding       |
| 10:00 | Barn Animal Encounter       |
| 10:30 | Free Flight Raptor Show     |
| 11:00 | Sheep Dog Show              |
| 11:00 | FREE 'Meet a Koala'         |
| 11:30 | Koala Keeper Talk           |
| 12:00 | Snake Photos                |
| 12:30 | Free Flight Raptor Show     |
| 13:00 | Sheep Dog Show              |
| 13:30 | FREE 'Meet a Koala'         |
| 14:00 | Koala Keeper Talk           |
| 14:30 | Platypus Keeper Talk        |
| 15:00 | Tasmanian Devil Keeper Talk |
| 15:30 | Sheep Dog Show              |
| 16:00 | Wild Lorikeet Feeding       |

## Cancellation Policy

All sales are final and incur 100% cancellation penalties.

|  |                 |   |
|--|-----------------|---|
| <br>Follow us | <b>enjoyaus</b> |  enjoyauscn  Enjoyaus 享樂澳洲遊 |
| Australia +61(0)2 9660 8881  |                 | E <a href="mailto:web@enjoyaus.com">web@enjoyaus.com</a>  |