

# Cairns Great Barrier Reef: Fly/Cruise Half Day Tour by Evolution Cruise

• 4 hours (approx.) •

## • KEY FACTS •



1. 25-min flight over the Great Barrier Reef to join Evolution at lunchtime
2. Two hours snorkelling at the Outer Great Barrier Reef
3. Snorkelling equipment & floatation devices
4. Free lycra/sun-suit hire
5. Lunch
6. Tea & coffee provided
7. Glass of wine and a light snack on return
8. Spacious air-conditioned modern lounges and stylish upper deck to relax in comfort
9. Reef Levy included



1. Transport from/to hotels
2. Food & beverages not listed as Inclusions
3. Souvenirs
4. Travel Insurance
5. Any optional extra items (including but not limited to Scenic Flight / Introductory dive / Certified dive / Semi-Submersible tour / encounters / experiences / photo packages) that are not included in the standard admission. All optional extra items are at own expense.

## Departure point

- Departs: Tuesdays, Wednesdays, Thursdays, Fridays, Saturdays  
Departs daily during School Holidays  
Tour does not run on Christmas Day (25 December), New Year's Day (01 January)
- Departure Point: Marina Point (Address: 2 Pier Point Road, Cairns City, QLD 4870)
- Departure Time: 12:30  
Departure times are reference only and subject to availability.
- Arrive back to Cairns Marlin Marina at approximately 16:30

## How to get there

- By Car  
- From Cairns CBD: head north-west on Esplanade towards Aplin St, keep left to continue on Florence St. At the roundabout, continue straight to stay on Florence St, at the roundabout, take the 3rd exit onto Lake St, at the roundabout, continue straight to stay on Lake St, turn right onto Airport Ave.  
- Parking is available at Cairns Airport.  
- Parking fees apply.
- By Public Transport  
- Please check the Transport QLD timetables (<https://translink.com.au/>) for more details to plan your trip.
- Alternatively you can choose to book this product with return hotel transfer services.

## Operating hours

All Year	12:30 - 16:30	check-in at 12:00
Christmas Day (25 December)	Closed	
New Year's Day (01 January)	Closed	

## Check-in requirements

Please arrive at the ticket office 60 minutes prior to the departure time to exchange for ticket/boarding pass before proceeding to the boarding terminal. Regrettably, failure to arrive before this time will most likely be classified as no-show and result in forfeiting the booking and it cannot be refunded or transferred.

If you are not familiar with the area or travelling on a weekend or local public holidays / school holidays, please make sure you've checked your timetable or driving route beforehand, and allow extra travelling time for unexpected delays to ensure you do not miss your check in

## What to bring/wear

- Motion-sickness medicine (if required)
- Swimwear, towel
- Change of clothes
- Protective clothing, hat, sunscreen lotion, and sunglasses

- Comfortable shoes
- Light jacket / sweater for windy or cool days
- Camera (waterproof)
- Money / credit card for optional purchases

## Other info

- Reef Cruise Child Policy
  - Child age 4-16 years;
  - Infants up to 3 years.
  - Passengers under the age of 18 years old, must be accompanied by an adult guardian.

### Helicopter Safety Policy

- Please consider weather and wind strength before booking Helicopter scenic flights are weather permitting.
- 110kg Helicopter flight weight restrictions apply.
- All trips are weather permitting at captains/drivers discretion. The operator reserves the right to cancel the tour, change vessel type or arrange an alternative carrier in the event of bad weather or mechanical problems.

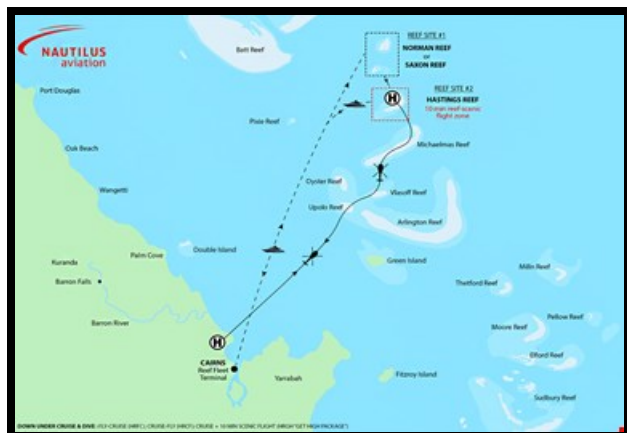
\*\*\*\*\*  
 [Important Post-Covid Service Information]

- Temporarily unavailable: fruit platter, cheese and biscuits and live music. Mini muffins and a slice will be available instead.
- Temporarily unavailable: semi-submersible/glass-bottom boat
- Cashless payment is preferred to avoid any contamination.
- Passengers must provide phone number, email or accommodation address. If the Service Provider does not have this information prior to travel, passengers will be refused entry. These records are used only for the purposes of tracing COVID-19 and are stored securely.
- If you are experiencing symptoms of COVID-19, you will be refused entry and advised to seek medical advice and to contact the Service Provider to reschedule your activity.
- During COVID restrictions, the Service Provider may not run if minimum numbers are not met. Passengers will be contacted as soon as possible to reschedule or offer a full refund.

## OVERVIEW

### Cairns Great Barrier Reef: Fly/Cruise Half Day Tour by Evolution Cruise

Arrive in style to Hastings Reef, from Cairns will board a luxury Nautilus Aviation Helicopter for a 25-minute scenic flight to see the magical colours of the reef from the air. This half day tour includes snorkelling, lunch and sun bathing. Finally kick back and relax while cruise back to Cairns, enjoying a complimentary glass of wine, cheese, fruit platter and live entertainment.



# Cairns Great Barrier Reef: Fly/Cruise Half Day Tour by Evolution Cruise

Take a 25-minute scenic helicopter flight over the Reef and Sand Cays before arriving to the exclusive helicopter pontoon. Enjoy snorkelling on the Outer Great Barrier Reef with all gear and tuition included. Visit exclusive reef site Hastings Reef, with plenty of time to enjoy relaxing and sun bathing on three deck levels. Dial up the adventure and choose from a variety of Optional Activities such as a ride on the Semi-Submersible tour (weather dependent), Marine Biology Snorkel lesson/Tour or just laze around on the massive sun-deck. Finally cruise back to Cairns with a glass of complimentary wine, cheese, fruit platter and live entertainment.

Take to the air and enjoy a spectacular scenic flight on board a luxury aircraft from Nautilus Aviation. Experience the sheer size and beauty of the Great Barrier Reef and gain a true appreciation of one of the seven natural wonders of the world. Sightings of manta rays, turtles and other marine life are not uncommon on the reef scenic flight and if flying in the winter months there is even a chance of spotting whales.

**Optional Activities:** (optional activities are not included in this package, additional fees apply.)

- For First Time Divers; after an in-depth briefing from the expert dive staff, they gear you up and jump in the water for the thrill of a lifetime as they guide you through this amazing wonderland.
- For Certified Divers; either buddy up with a friend or join the guides as plunge into the abundance of marine life and explore the amazing ecology of the reef.
- In the afternoon there's a choice of a ride on the Semi-Submersible tour (weather dependent), more snorkelling or diving, or just laze around on the massive sun-deck.

**If choose Optional Activities, please note:**

## Age Limit

- Introductory Diver: Minimum age 12
- Certified Diver: Minimum age 12 Must Dive with Parent, Guardian or private guide.

## Important Dive Information

- All divers must complete a Queensland Medical Questionnaire. For more details please check: <https://www.enjoyaus.com/pdf/intro-dive-waiver.pdf>
- Certified divers must show an internationally recognised scuba card.
- Divers over 65 years old (45 years for dive courses) and anyone who answers YES to any of the questions on the medical questionnaire will require a recreational dive medical prior to diving.
- Please be aware that certain medical conditions (e.g. asthma, heart disease, diabetes) and/or prescription medication may prevent some people from diving.
- In the interests of safety, recommend no flying within 24 hours of last dive. Guest will not be allowed to dive until guest is declared medically fit to dive.

## • POLICY •

## Cancellation Policy

- If you cancel at least 7 day(s) in advance of the scheduled departure, there is no cancellation fee.
- If you cancel between 0 and 6 day(s) in advance of the scheduled departure, there is a 100 percent cancellation fee.
- If no show, no refund.



Follow us

Australia +61(0)2 9660 8881

**enjoyaus**

enjoyauscn f Enjoyaus 享樂澳洲遊

E [web@enjoyaus.com](mailto:web@enjoyaus.com)