

Great Barrier Reef Full Day Tour by Reef Magic Cruise Depart from Cairns Hotels: Fly/Fly

• 5 hours (approx.) •

• KEY FACTS •



1. All snorkelling equipment including personal flotation devices in adult/child sizes
 2. FREE Wet suit and lycra suit
 3. On board Marine Biology presentation/talk en-route to the reef
 4. Glass Bottom Boat and Semi-submersible tours
 5. Fish feeding and identification session with our Marine Biologist
 6. Underwater Observatory
 7. Use of Sundeck, Fresh Water Showers and Changing Rooms
 8. Morning/Afternoon Tea
 9. Full hot/cold buffet lunch with vegetarian options
 10. Tea/Coffee and drinking water is available free of charge throughout the day
 11. Return helicopter flight to Reef Magic Pontoon
- Proof of vaccination is required



1. Return Transfers from your hotel
2. Food & beverages not listed as Inclusions
3. Souvenirs
4. Travel Insurance
5. Any optional extra items (including but not limited to experiences / photo packages) that are not included in the standard admission. All optional extra items are at own expense.

- Departure point** • Departs: Tuesdays, Thursdays, Sundays, plus selected dates during school holiday periods.
Operating dates and departures are subject to change
Tour does not run on Christmas Day (25 December)
- Departure Point: Cairns Marina Point (address: 2 Pier Point Road, Marina Point, Cairns QLD 4870)
 - Helicopter Departure Time: 10:35 (approx.)
Departure times are reference only and subject to availability
Complementary transfer from/to selected hotels included before departure time. Must be pre-booked.
 - Helicopter leaves outer reef at approximately 15:10
 - Arrive Cairns at 15:35

How to get there

- By Car
Located in Cairns City, approximately 250m from The Pier Cairns

Closest Parking:

- The Pier, Cairns (Address: 1 Pier Point Rd, Cairns City QLD 4870), approximately 3 minutes walk
- Shangri-la Hotel Cairns (Address: Pier Point Rd, Cairns City QLD 4870), approximately 2 minutes walk
- Parking fees apply

- By Public Transport
Please check the Transport QLD timetables (<https://translink.com.au/>) for more details to plan your trip.
- Alternatively you can choose to book this product with return hotel transfer services.

Operating hours

Tuesdays, Thursdays, Sundays

10:35 - 15:35

Reconfirmation requirements

Please be advised you are required to contact The Service Provider 24 hours prior to the travel date during business hours to reconfirm your booking, departure location and time, and boarding time with your confirmation number. Please adjust your travel plan according to the details given by The Service Provider at time of reconfirming.

Check-in requirements

Please arrive 10 minutes prior to the pick-up time at your booked pick up location. There might be 5-10 minutes delay depends on the traffic on the day. If you think the pick is late or you are not being picked up, please call The Service Provider and quote your confirmation number to double check.

What to bring/wear

- Motion-sickness medicine (if required)
- Swimwear, towel
- Protective clothing, hat, sunscreen lotion, and sunglasses
- Comfortable shoes
- Light jacket / sweater for windy or cool days
- Camera (waterproof)
- Money / credit card for optional purchases

Other info

- Accurate passenger weights are requested at time of booking for all helicopter passengers.
- Child age for all helicopter flights is 3-14 years.
- One (1) infant under the age of 3 may travel free of charge if seated on a guardian's lap. Maximum one infant per helicopter as per CASA regulations - subject to pilot approval.
- Bookings can be made for individuals, however a minimum of 2 persons is required for helicopter to operate. Flights are subject to pilot's discretion, weather, air traffic control and availability.

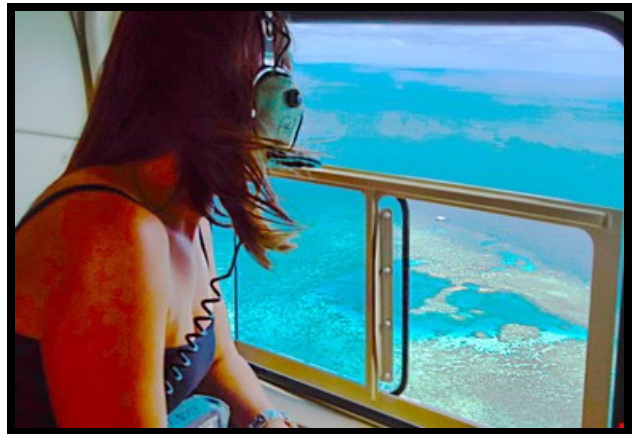
【Important Post-Covid Service Information】

- Minimum booking of 6 passengers. Tours may not proceed if minimum number is not met.
- Please refer to the below webstist for the latest updates during the post-Covid period.
<https://www.reefmagic.com.au/>

• OVERVIEW •

Great Barrier Reef Full Day Tour by Reef Magic Cruise Depart from Cairns Hotels: Fly/Fly

The Reef Magic Pontoon is moored 45kms east of Cairns, at Moore Reef. With depths ranging from 1 – 25m there is a variety of coral and marine life, making it the perfect Cairns reef tour & location for snorkelling, scuba diving and sea trek helmet diving.



Great Barrier Reef Full Day Tour by Reef Magic Cruise Depart from Cairns Hotels: Fly/Fly

Travel in style and book a helicopter flight to/from Reef Magic Pontoon (two-way helicopter flight – approx. 20 minutes flying time each way).

Breath taking scenic reef flights are an alternative to in-water activities and coral viewing vessels, soar above it all in a helicopter for a spectacular birds eye view of the Great Barrier Reef!

From the moment you lift off uninterrupted panoramic views provide a unique perspective of this stunning World Heritage Listed location. The turquoise waters of the Coral Sea are alive with extensive coral formations. Spot turtles, rays, reef sharks and schooling fish.

Snorkelling

The Reef Magic Pontoon has been hand picked for its superior water clarity, biological diversity and overall quality of marine life. It is without doubt one of the most beautiful reef locations available anywhere in Australia and perfect for snorkellers.

On arrival at Reef Magic Pontoon the crew will provide some handy tips on the correct use of snorkelling equipment and then help fit you with a mask, snorkel and fins so you can take to the water with confidence (all included in the cruise price).

The snorkel area is supervised at all times and personal flotation devices are readily available in adult and child sizes. Stairs lead down from the main deck to a submersed snorkel platform where you can sit down and put on your mask and fins. Access to the water could not be easier with the snorkel platform opening directly into a shallow, bright and sheltered coral lagoon.

Beginner snorkellers will feel comfortable being able to see the bottom at all times and an array of colourful corals and incredible fish life can be immediately seen without even letting go of the platform!

Glass Bottom Boat Tours

The open-air Glass Bottom Boat is more maneuverable, allowing your guide to hover over beautiful coral gardens, giant clams, schools of colourful reef fish and more!

Tours last around 30 minutes and include a running commentary.

Underwater Observatory and Fish Feeding Demonstration

The underwater reef viewing observatory is open for you to walk through at any time of the day. Watch the Introductory Scuba Divers head off from the moon pool.

At lunch time the Marine Biologist will announce the fish feeding demonstration which starts in front of the observatory windows before moving to the snorkel platform.

The feeding frenzy includes large schools of Red Bass, Trevally and the star of the show, Wally, the resident Giant Maori Wrasse!

For an exhilarating experience grab your snorkelling gear and get amongst it or take a seat on the submersed snorkel platform as the fish bustle in around you looking for a free lunch!

Marine Biologist Presentation

En route to Reef Magic Pontoon the Marine Biologist conducts an informative slide show presentation, loaded with interesting facts on the Great Barrier Reef and tips on how to make the most of your reef visit. The presentation is conducted in the main saloon and relayed to TV monitors throughout the vessel. Reference books are also available as well as waterproof fish/coral ID cards designed to be taken diving or snorkelling.

Sample Itinerary

Reference Only. Subject to change without notice. Itineraries may operate in reverse order, in a different sequence, be swapped around, or in rare circumstances be replaced by other best suited items to suit tides, times & conditions.

Time	Itinerary
09:30 - 10:00	Check-in
10:35	Helicopter Departs Cairns. Travel time is only about 20 minutes.
11:00	Arrive at Reef Magic Pontoon on the Outer Great Barrier Reef. Reef duration: 4 hours
15:10	Helicopter Departs Reef Magic Pontoon
15:35	Arrive back in Cairns

Cancellation Policy

- If you cancel at least 7 day(s) in advance of the scheduled departure, there is no cancellation fee.
- If you cancel between 0 and 6 day(s) in advance of the scheduled departure, there is a 100 percent cancellation fee.
- If no show, no refund.

		 enjoyauscn  Enjoyaus 享樂澳洲遊
Australia +61(0)2 9660 8881		E web@enjoyaus.com